

# Installing manual



« Les Espaces de Balma »  
18 avenue Charles de Gaulle - Bât. 34 - 31130 BALMA  
Tel : 33 (0) 562 571 571  
[www.medicapteurs.fr](http://www.medicapteurs.fr)



# Foreword

---

You are a new MEDICAPTEURS product's owner of and we thank you.

The MEDICAPTEURS platform is a high performance system. Such an exceptional quality of results demands a great care of the platform. It's essential to read this manual before using the platform.

The MEDICAPTEURS software was created to be « User-Friendly », but this shouldn't keep you from reading the user manual.

Added to this manual, you can find the platform and software **User Manual** on the Medicapteurs CDRom or USB key.

ENJOY READING THE USER MANUAL AND WELCOME TO THE  
MEDICAPTEURS PLATFORM USER CLUB.

# Quality requirements

This product was tested and approved for the Annex VI, section 3 of the Directive 93/42/EEC for Medical Device.

DEKRA Certification GmbH (Identification Number 0124) approved the Quality System used for Products Final Test.

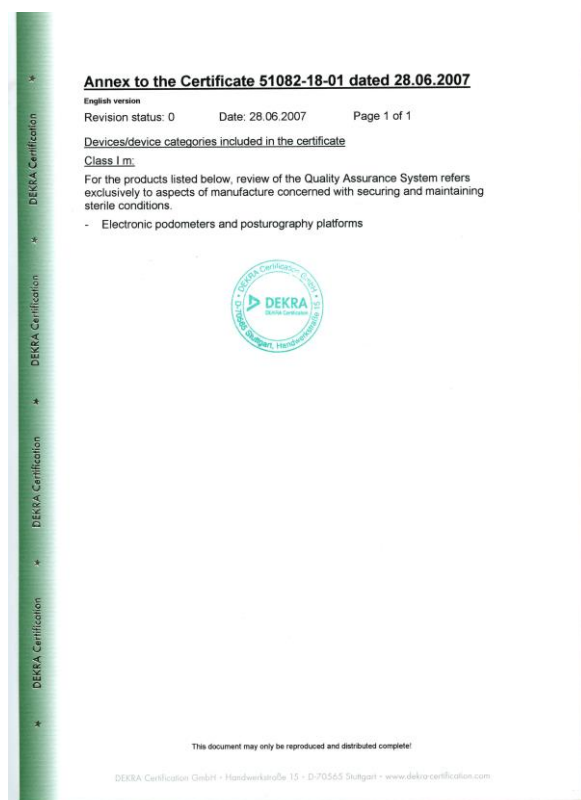
**GESTION  
DE LA QUALITÉ**  
Certifié conforme  
à la directive 93/42/CEE  
relative aux dispositifs médicaux



MEDICAPTEURS system is in accordance with these following norms :

- EN 60601-1-1 August 2001
- EN 60601-1-2 August 2005
- EN 60601-1-4 October 1999
- EN 60601-1-6 September 2007
- EN 62366 March 2008
- EN 62304 October 2006
- EN ISO 14971 November 2009

Medicapteurs is certified for its quality system.



# Summary

---

<b>FOREWORD .....</b>	<b>3</b>
<b>QUALITY REQUIREMENTS.....</b>	<b>4</b>
<b>SUMMARY .....</b>	<b>5</b>
<b>PACKAGE CONTENT .....</b>	<b>7</b>
<b>AVAILABLE AND SPARE PARTS .....</b>	<b>8</b>
WIN-POD PLATFORM .....	8
WIN-TRACK AND WIN-TRACK MINI PLATFORMS .....	10
FUSYO PLATFORM.....	10
<b>PLATFORM PRESENTATION .....</b>	<b>12</b>
TECHNICAL INFORMATION.....	12
MEDICAL PURPOSE .....	15
INDICATIONS .....	15
CONTRAINDICATIONS .....	15
SIDE EFFECTS .....	15
INSTRUCTIONS.....	16
SPECIFIC INSTRUCTIONS FOR FUSYO .....	17
HYGIENE/CLEANING .....	17
LOGOS .....	17
<b>SOFTWARE AND DRIVER INSTALLATION .....</b>	<b>18</b>
REQUIRED CONFIGURATION .....	18
WIN-POD WIFI : WIFI ADAPTER INSTALLATION .....	18
INSTALLATION .....	19
<b>WIN-POD WIFI USE.....</b>	<b>21</b>
TURN THE PLATFORM ON .....	21
BATTERY CHARGE .....	21
OPERATION INDICATOR .....	22
<b>CONNECTING THE WIRED WIN-POD .....</b>	<b>23</b>
CONNECTING THE PLATFORM .....	23
OPERATION INDICATOR .....	23
<b>CONNECTING THE WIN-TRACK AND WIN-TRACK MINI.....</b>	<b>24</b>
CONNECTING THE PLATFORM.....	24
PERIPHERAL CONNECTIONS.....	25
OPERATION INDICATOR .....	25
<b>CONNECTING THE FUSYO.....</b>	<b>26</b>
INSTALLING THE PLATFORM .....	26
CONNECTING PODOMETRY PART.....	28
CONNECTING STABILOMETRY PART .....	28
REGISTRATION OF THE CONFIGURATION.....	29
OPERATION INDICATOR .....	30
<b>SCANNER .....</b>	<b>31</b>
TECHNICAL INFORMATION.....	31
SCANNER LOCK .....	32
CONNECTING THE SCANNER .....	33

<b>BLUETOOTH REMOTE INSTALLATION AND CONFIGURATION.....</b>	<b>34</b>
COMPUTER CONFIGURATION.....	34
MOBILE CONFIGURATION .....	36
<b>SOFTWARE REGISTRATION PROCEDURE.....</b>	<b>37</b>
LICENCE CHECKING .....	37
LICENCE REGISTRATION PROCEDURE .....	37
<b>MEDICAPTEURS DATABASE IMPORT.....</b>	<b>39</b>
<b>USING THE PLATFORM.....</b>	<b>40</b>
STATIC ACQUISITION .....	40
DYNAMIC ACQUISITION .....	40
POSTURAL ACQUISITION .....	41
PROCEDURE TO SHUT DOWN THE PLATFORM .....	41

# Package content

---

Check that your package contains:

- Platform
- Wire
- Installing and using manuals
- Installing CDRom or USB key
- **For Win-pod WiFi platforms:** two batteries with their USB cable and a charger, a WiFi key.
- **For Win-track and Win-track mini platforms:** a key, an USB connection cover, two screws and a jack reprogramming in a plastic bag.
- **For Fusyo platforms:** a positioner and a transparent wedge.

## LIMITATION ON WARRANTY

The platform is delivered in a customized packaging to protect the sensitive parts (electronics and sensors).

In case of after sale service, the warranty will not be applied if the product is not shipped back **in its original packaging**.

We recommend you to keep the original packaging even after the warranty period. If needed, Medicateurs will invoice a new packaging for you product shipment.

# Available and spare parts

## Win-pod platform

---

### Suitcase

(Ref :ValiseWinPodFusyo)



### Light suitcase

(Ref : Valise\_T\_Plate)



### Positioner

(Ref :PositionneurWinpod)



### Platform support

(Ref : Kit-Support)





# Available and spare parts

For wired platforms :  
**4.5 meters wire**  
(Ref :CableWPod4\_5)



For WiFi platforms :  
**Black batterie**  
(Ref : Powerblank3)



For WiFi platforms :  
**USB charger**  
(Ref : Transformateur10)



For WiFi platforms :  
**Wifi key**  
(Ref : Cle9)



# Available and spare parts

## Win-track and Win-track mini platforms

---

### 5 meters wire

(Ref : CableWT\_5)



### Light suitcase for Win-track

(Ref : ValiseWintrack)



### Light suitcase for Win-track mini

(Ref : ValiseWintr\_mini)



## Fusyo platform

---

### Suitcase

(Ref : ValiseWinPodFusyo)



### Dynamic imbalance plate

(Ref : Plateaudesequilibr)



# Available and spare parts

**Foams for Podal Stimulation**  
(Ref : MousseStabilo)



**4.5 meters wire**  
(Ref : CableWPod4\_5)



**USB wire (posturo)**  
(Ref : Cable2)



**FUSYO Positioner**  
(Ref : PositionneurFusyo)



# Platform presentation

## Technical information

General	
Sensor type	Resistive
Min/max pressure range per sensor	from 0,4 to 100 N
Acceptable temperature (operation and storage)	from 0 to +40°C
Humidity	from 30 to 80 % HR
Power surge category	I
Acquisition frequency	Up to 200 images/sec
Accuracy	5%



Win-pod	
Active surface	400 x 400 mm
Sensor size	8 x 8 mm
Sensor number	2304 soit 48 x 48
Wired Win-pod	
Size (Length/Width/Height)	600 x 530 x 45 mm
Weight	6,6 kg
Power	via USB (5V, 400mA)
PC/platform connection type	USB
Win-pod WiFi	
Size (Length/Width/Height)	610 x 530 x 25 mm
Weight	6.8 kg
Power	High capacity rechargeable battery
PC/platform connection type	Wifi or USB

# Platform presentation

## Technical information



Win-track	
Size (Length/Width/Height)	1610 x 652 x 30 mm
Weight	11,8 kg
PC/platform connection type	USB
Power	via USB (5V, 400mA)
Active surface	1500 x 500 mm
Sensor size	7,8 x 7.8 mm
Sensor number	12288 (192 x 64)



Win-track mini	
Size (Length/Width/Height)	1115 x 652 x 30 mm
Weight	8 kg
PC/platform connection type	USB
Power	via USB (5V, 400mA)
Active surface	1000 x 500 mm
Sensor size	7,8 x 7.8 mm
Sensor number	8192 (128 x 64)

# Platform presentation

## Technical information



Fusyo	
Size (Length/Width/Height)	600 x 530 x 70 mm
Weight	12,5 kg
Power	via USB (5V, 400mA)
PC/platform connection type	USB
Electronic podometric characteristics	
Sensor size	8 x 8 mm
Sensor number	2304 (48 x 48)
Stabilometric podometric characteristics	
Sensor	3 strain gauges
Maximum charge	250 Kg
Nonlinearity	< 0,2%
Frequency of acquisition	Up to 40 Hz

# Platform presentation

## Medical purpose

---

WIN-POD, WIN-TRACK and WIN-TRACK mini are podometry platforms which study the foot pressure mapping and the orthostatic balance in static, dynamic or postural acquisition. It allows you to objectively assess biomechanical parameters of the foot for the pathology diagnostic process.

The FUSYO platform is a system integrating the functionality of an electronic baropodometry platform and a standardized posturology platform (APE 85). It is the only device in the world that mixes standardized stabilometric data with pressure mapping and the centroids of each foot.

These platforms can be used by many health specialties: Podiatry, Physical therapy, Sport Medicine, Rehabilitation, Orthopaedics, Rheumatology, Chiropractic...

## Indications

---

Read the following instructions to install and use the system correctly.

## Contraindications

---

Monitor the patients with severe balance problems while making acquisitions. During some protocols, you need to stay close to keep the patient from falling.

In order to be in accordance with the EN 60601-1 norm, current version, the platform doesn't have to be disassembled.

## Side effects

---

There are no known side effects.

The product development takes into consideration skin allergy risks and electric shock hazard.

# Platform presentation

## READ THIS BEFORE USING THE PLATFORM

The platform is a very sensitive and accurate tool. The sensor quality response depends on the **respect of the following instructions.**

### Instructions

---

- The sensors' life time depends on the respect of those indications. Be careful with the platform when you move it.
- Please handle the platform with caution as you move it, and avoid shocks on the sensors. If you have to ship the platform, don't forget to protect the active area.
- **Always use the same USB port on the PC** (do not change the USB Plug-in).
- **The platform must be plugged exclusively into a normalized computer EN 60601-1, current version (particularly as it pertains to power connection).** No peripheral device should be connected to the computer except if it is self powered (key board, mouse, USB key) or in compliance with regulations EN 60601-1, current version.
- Take care not to bend the connectors of the platform and to unplug the USB from the PC cable prior to any manipulation of the platform.
- **Save your database regularly.**
- In order to be in accordance with the EN 60601-1 norm, **the platform doesn't have to be disassembled.**
- Do not expose the platform directly to the sun (risks of burns).
- This product doesn't need any specific care about the EMC (electromagnetic compatibility). It is an EN 60601-1, current version, certified product so it has been tested by a qualified official organism (Emitech).
- To get a correct acquisition, the platform must be laid on a hard, flat, and dry ground.
- If you stand on the platform with shoes on, check if there might be something dangerous for the platform (like stone, stud...). Do not wear high heels while on it.
- The patient must not step barefoot on the platform. Please provide socks if necessary, to avoid potential reactions due to foot/surface contact.
- The patient must not step on the hood of the platform, and must only put their feet on the sensitive part.



# Platform presentation

## Specific instructions for FUSYO

---

- The platform must never take off from the ground during an acquisition, the effects of sway or balance on the strain gauges lead to their deterioration.
- **Never perform a dynamic analysis without a walking track:** risk of falling of the patient and deterioration of the force sensors.
- Ask the patient to **get on and off the back of the platform** to avoid tipping over, help him if necessary.

## Hygiene/Cleaning

---

- After each patient, clean the platform's upper surface with a product like «cleaning wipes» or any type of antiseptic wipes for medical devices. Do not use disinfectant spray containing alcohol.
- For a best hygiene quality, the patient must wear socks; the measure alterations are considered negligible.

## Logos

---



: Medical Device in accordance with the ECC 93/42 Directive.



: DEKRA Certification Organism

**0124**

: Dekra Official Recording Number



: USB connection Device



: « B » type Device



: WEEE device (Medical Electric and Electronic Equipment).  
Do not trash. Medicauteurs is in charge of its Waste recycling. The black rectangle means that the platform was built after 8th August 2005.



: Incentive for user to read instructions.

# Software and driver installation

**WARNING!!! IF YOU ALREADY HAVE A MEDICAPTEURS SOFTWARE ON YOUR COMPUTER, DON'T FORGET TO SAVE THE DATABASE BEFORE INSTALLING THE NEW SOFTWARE.**

## Required configuration

---

You may consult us before changing your computer.

To install and use the software, you need a computer including these characteristics:

- **Type** : PC Dual Core minimum
- **Ram** : 4 Go minimum
- **System** : **Windows 7, 8 or 10**
- At least **2 USB ports dedicated** pour Win-pod, Win-Track and Win-track mini and **3 USB ports USB dedicated** for Fusyo.

## Win-pod WiFi : WiFi adapter installation

---



**Do not plug the adapter in before installing the drivers.**

In the Medicapteurs installation USB key, you will find the setup (as shown below) in the Drivers\WIFI\Setup.exe, that you'll simply have to run.

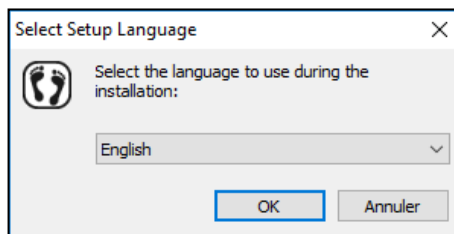
Once the installation has ended, you can plug the adapter in. It's important to always use the same USB port for the adapter.

# Software and driver installation

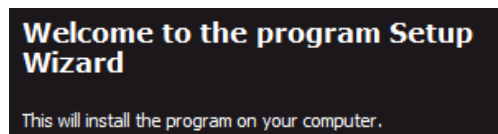
## Installation

---

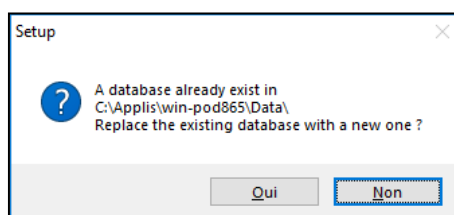
1. **Do not connect** your platform.
2. Power up your computer, or close all applications if it's already on.
3. Insert the software CDrom or the USB key in the reader.
4. Double-click on the « Computer » icon then on your CDrom or USB key reader.
5. Double-click on **Setup.exe**.
6. Choose the installation language and click on « OK ».



7. The Welcome screen appears:



8. Click 4 times on "Next".
9. **Type of platform**: choose your platform and click on "Next".
10. **System of measurements units**: choose your measuring system, Imperial or Metric and click on "Next".
11. **Language**:.choose the software language and click on "Next".
12. The Summary screen appears. If you agree with the written information click on "Next" to start the installation
13. If you already have a Medicauteurs' product, **to keep your existing database**, choose "**No**":

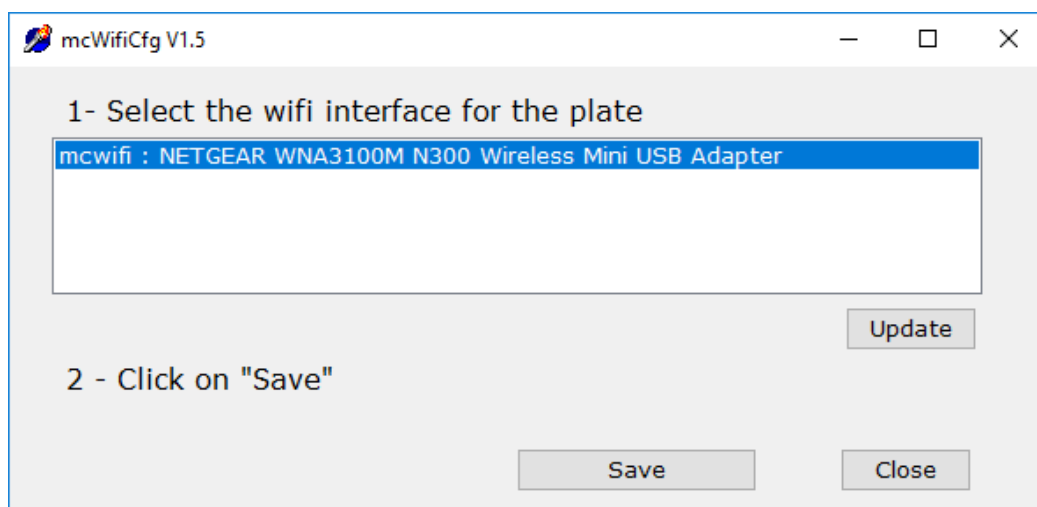


# Software and driver installation

14. During this installation, depending of your operating system, the following window could appear, check « Always trust software from Mediateurs France » and then click on « Install » :



15. During installation, a warning from your anti-virus could appear. Click on "Ok" to avoid stopping the installation.
16. **If you have a Winpod WiFi platform :** select the Wi-Fi adapter that was given to you with the platform (NETGEAR wireless usb adapter). And Click on Save.



17. Click on « Finish » to restart your computer.

# WIN-POD WiFi use

## Turn the platform on

---

To turn it on, you need to **plug the battery in**, logo facing up.

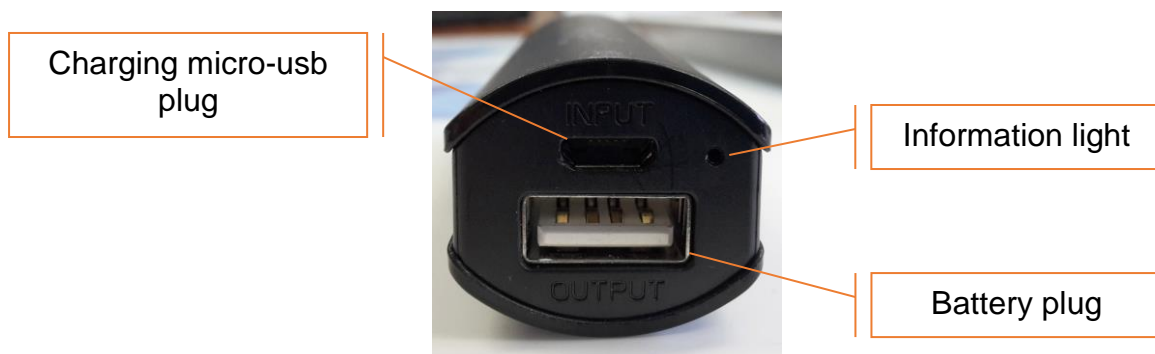


**WARNING** : Do not use the USB connector on the back of the platform to power it if the platform is in WiFi mode.

## Battery charge

---

1. To charge the battery link the micro-usb plug with USB Charger.
2. Look in the hole the information light. If the light is flashing, the battery is charging. When it's charged, the light stays on.



The number of flashes of the information light indicates the charge level.

- 4 flashes is full battery
- 3 flashes is battery full at 75%
- 2 flashes is battery full at 50%
- 1 flash is battery full at 25%

To have this information wake up the battery by unplug it from the USB Charger or plug and unplug it from the platform. If the light stays off, the battery is fully discharged.

# WIN-POD WiFi use

## Operation indicator

---

### *Initialization*

When turning the platform on, a ten-seconds long **initialization phase** will be represented by the successive flashing of the LEDs within the logo.



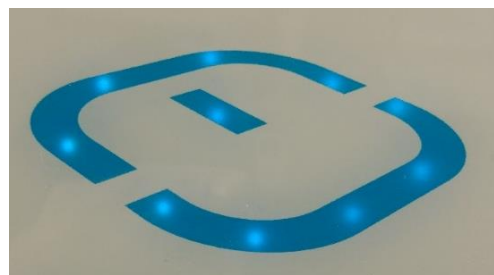
### *Functioning*

When the platform is **on and in use**, the LEDs will flash, as if following each other. The central LED is on and indicates that the platform is connected.



### *Stand-By*

When the platform is on **stand-by**, the LEDs are synchronized and pulse together, then turn off. The platform will enter stand-by mode after 10 minutes of inactivity in the software, and when you close the software.



**To exit the stand-by mode**, push on the WiFi logo on the platform, as shown here:

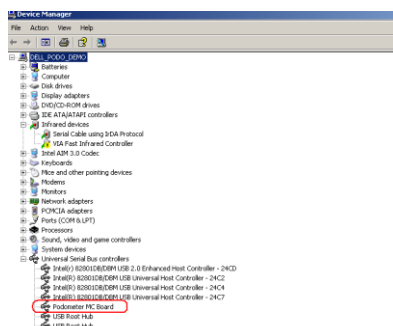


# Connecting the wired WIN-POD

## Connecting the platform

To get an accurate acquisition, the platform must be **imperatively** laid on a hard and flat ground. The platform's anti-slid patches will stabilize the platform on a slippery ground during the dynamic acquisition.

1. **Unplug all USB devices** (except mouse and keyboard).
2. Take the wire, then plug it in the platform's connector.
3. Screw the blue ring to lock it with the platform.
4. Plug the USB connector with a PC USB port (the LED will lit up green).
5. VERIFICATION: To check that the driver is correctly installed, go to « Start / Control Panel / System / Hardware / Device Manager / USB controllers ». The line « Podometer MC board » will appear if the installation was faultless.



## Operation indicator

Thanks to the 3 LEDs, you can check the platform:



Red light  
Led flashes = Data transfer to  
the PC

Red light  
Led on = Platform recognized  
by the PC (driver installed)

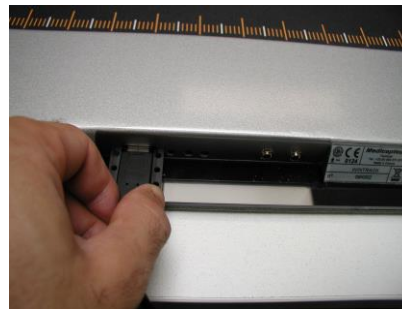
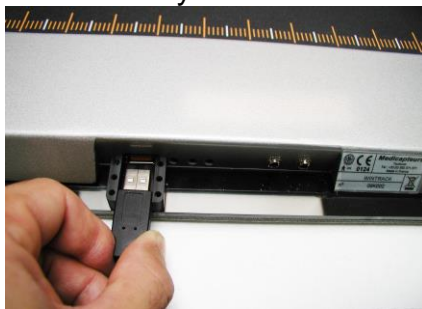
Green light  
Led on = Platform powered by  
the PC

# Connecting the WIN-TRACK and WIN-TRACK mini

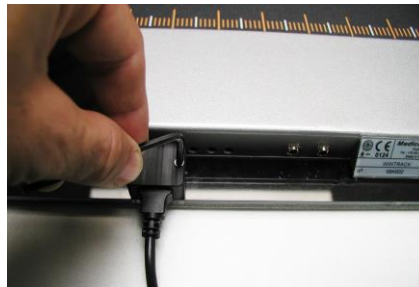
## Connecting the platform

To get an accurate acquisition, the platform must be **imperatively** laid on a hard and flat ground. The platform's anti-slid patches will stabilize the platform on a slippery ground during the dynamic acquisition.

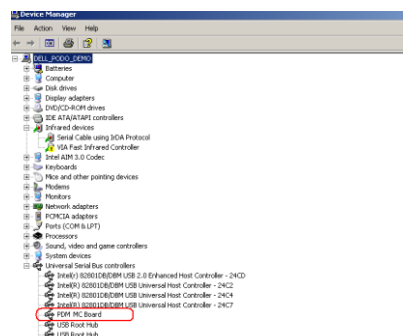
1. **Unplug all USB devices** (except mouse and keyboard).
1. Insert the USB key into its connector, located on the back of the Win-Track



2. Put the cover on the USB connection plug on the Win-Track and use the 2 screws to lock it.



3. Connect the other end of the USB cable to the computer. You will later install the Win-Track driver.
4. VERIFICATION: To check that the driver is correctly installed go to « Start / Control Panel / System / Hardware / Device Manager / USB controllers ». The line « PDM MC board » will appear if the installation was faultless.





# Connecting the WIN-TRACK and WIN-TRACK mini

## Peripheral connections

It is possible to connect external peripheral devices to the platform (In and Out connectors located on the back of the platform). These peripheral connectors are designed to synchronize measurements between external devices and the platform (the platform can synchronize the peripheral device or the peripheral device can synchronize the platform).

For example: when the platform starts a measurement, it can launch another measurement at the same time on a connected EMG device to correlate measurements with the same timing.



In connector: the external peripheral device synchronizes the platform.

Out connector: the platform synchronizes the external peripheral device.

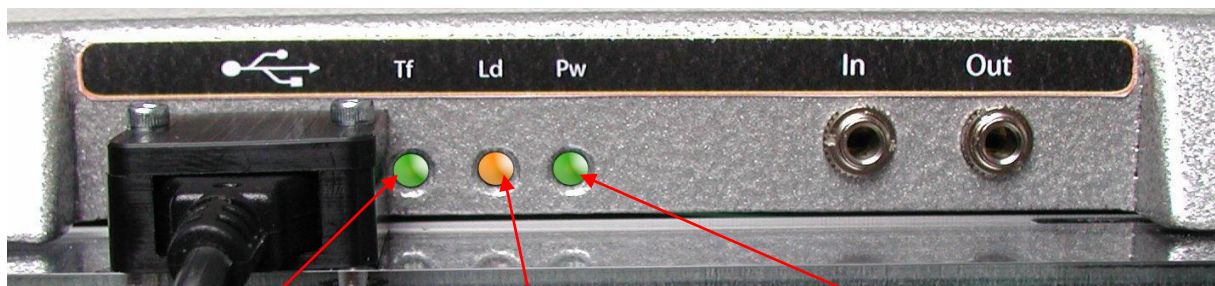
Devices that can be synchronized: EMG, Video...

All these devices have to be approved by Medicateurs and must comply with EN 60601-1 regulations (particularly as it relates to power).

**Please contact Medicateurs for specific complementary information prior to using these peripheral connectors.**

## Operation indicator

Checking function status with the 3 lights on the back of the platform:



Light Tf  
Light blinking = Transfer of  
data to PC

Light Ld  
Light on = Platform properly  
connected to PC (driver  
installed)

Light PW  
Light on = Power to the  
platform

# Connecting the FUSYO

## READ IT BEFORE USING PLATFORM

The platform is a very sensitive and accurate tool. The sensor quality response depends on the **following instructions respect**.

### Installing the platform

To make a good acquisition, the platform must be **imperatively** put on a hard and flat ground. The platform un-slide stands stabilize the platform on a slippery ground during the dynamic acquisition.

- Screw off the 3 balls on the sensors (Fig.1) in order to the 4 grey un-swing stand don't touch the ground (Fig 2,3).

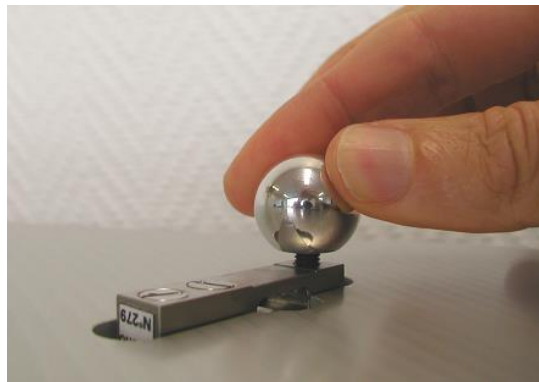


Fig. 1



Fig. 2

# Connecting the FUSYO

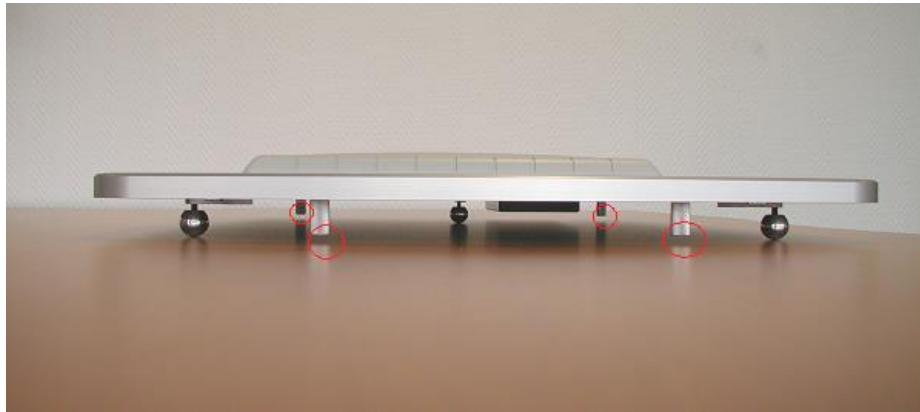


Fig.3

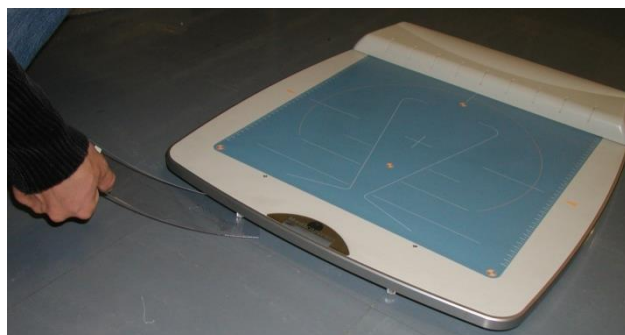
- Warning : **Don't screw off** the 4 grey un-swing stand (Fig 4).



Fig.4

- Using the wedge

A 2mm wedge is provided to be positioned under the stabilization feet for verifying proper spacing between the stabilization feet and the ground



Verify each of the four feet.

# Connecting the FUSYO

## Connecting podometry part

---

1. **Unplug all USB devices** (except mouse and keyboard).
2. Take the FUSYO **black** wire then put it in the platform plug and in a PC USB port: **do not use a USB hub**.



## Connecting stabilometry part

---

Take the **gray** FUSYO USB cable, connect it on the platform and on the PC: **do not use a USB hub**.



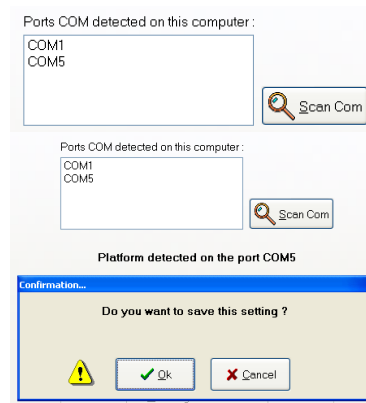
# Connecting the FUSYO

## Registration of the configuration

---

« **Scan Com** » is **a mandatory step to ensure the proper connection** of the platform with the computer. This function allows for the computer to connect to the platform each time you start your PC.

**When launching the software**, a parameters window opens. Click on « **Scan Com** ».

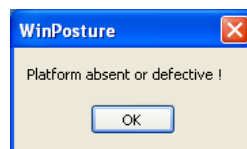


By clicking on « **Ok** » : the software registers and saves the plate connection configuration and will automatically establish that particular connection for future use.

### Important notice

#### Changing the connection configuration

In certain occasions, **the port attributed to the platform may change** (i.e.: connecting new peripheral USB devices, or connecting the platform to another USB port, etc.) and therefore the software does not « identify » the new USB port location and as a result a message error is displayed :



It is necessary to select « **Scan Com** » to register the new configuration :

Launch the software, go to « configuration » menu, and select « parameters », click on the « platform » tab and then click on « Scan Com ».

# Connecting the FUSYO

## Operation indicator

---

Thanks to the 5 leds, you can check the platform:



Green light  
Led flashes = Plateform  
powered by the PC  
and ready to be used

Green light  
Led flashes = Data transfert  
to the PC

Green light  
Led on = Plateform powered  
by the PC

Red light  
Led flashes = Data transfert  
to the PC

Red light  
Led on = Platform recognized  
by the PC (loaded driver)

# Scanner

## Technical information

---

General	
Image Sensor	CCD
Optical Resolution	1600 dpi
Scan Modes	Color: 48-bit input, 24-bit output Grayscale: 16-bit input, 8-bit output B/W: 1-bit output
Color Depth	Input 48-bit; Output 24-bit
Scanning Speed	8.5 sec (Color/ Grayscale/ B&W mode, 300dpi, A3)
Scanning Area (W x L)	Max. 304.8 mm x 431.8 mm, A3
Daily Duty Scan ( Sheets )	2,500
Acceptable temperature (operation and storage)	from 0 to +40°C
Power Supply	24 Vdc/ 1.67 A
Power Consumption	< 36 W (operation), < 4 W (idle)
Interface	USB 2.0
Net Weight	7.5 Kg
Dimensions (W x D x H)	623 x 400 x 133 mm
Maximum weight allowed	120 Kg



# Scanner

## Scanner Lock

---

Your scanner is designed with two different lock statuses to protect the optical parts. To ensure the scanner working properly, you have to choose an appropriate lock status according to the situation.

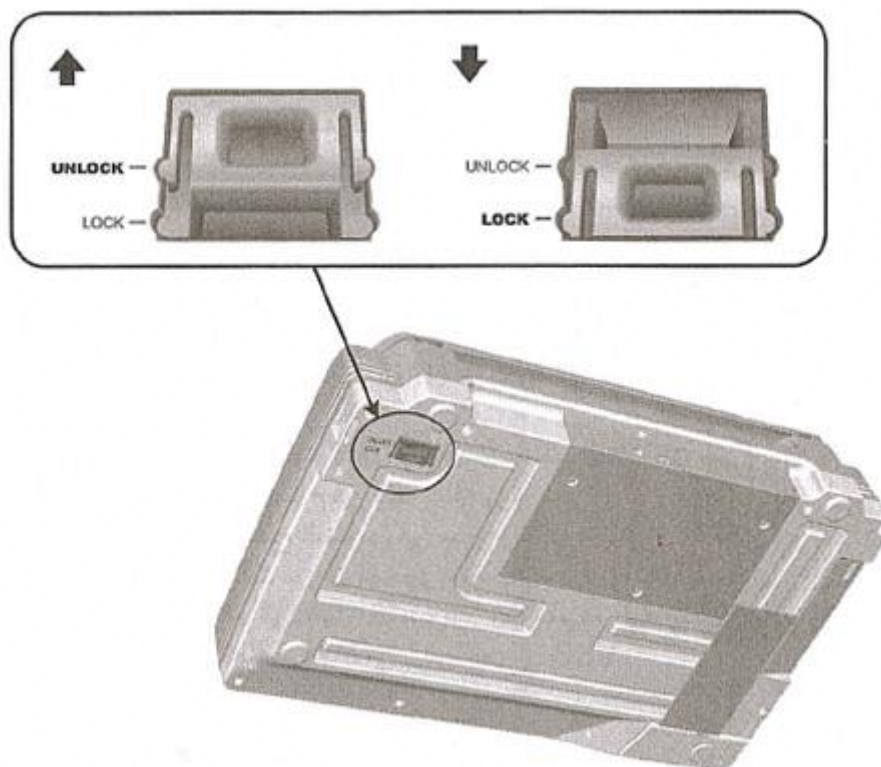
### Always Unlock:

A scanning-ready status. Furthermore, if you place your scanner on a long-term position, you can also keep your scanner lock in this status. To unlock the scanner, slide the locking switch on the scanner's underside toward the back panel of the scanner until it snaps into place.

### Always Lock:

It holds the scanning head in place during transportation and traveling. The scanner will be kept in disabled status. To lock the scanner, slide the locking switch on the scanner's underside toward the power LED of the scanner until it snaps into place.

**WARNING:** When you move the scanner, do lock the scanner to ensure accurate and problem-free use of your scanner.





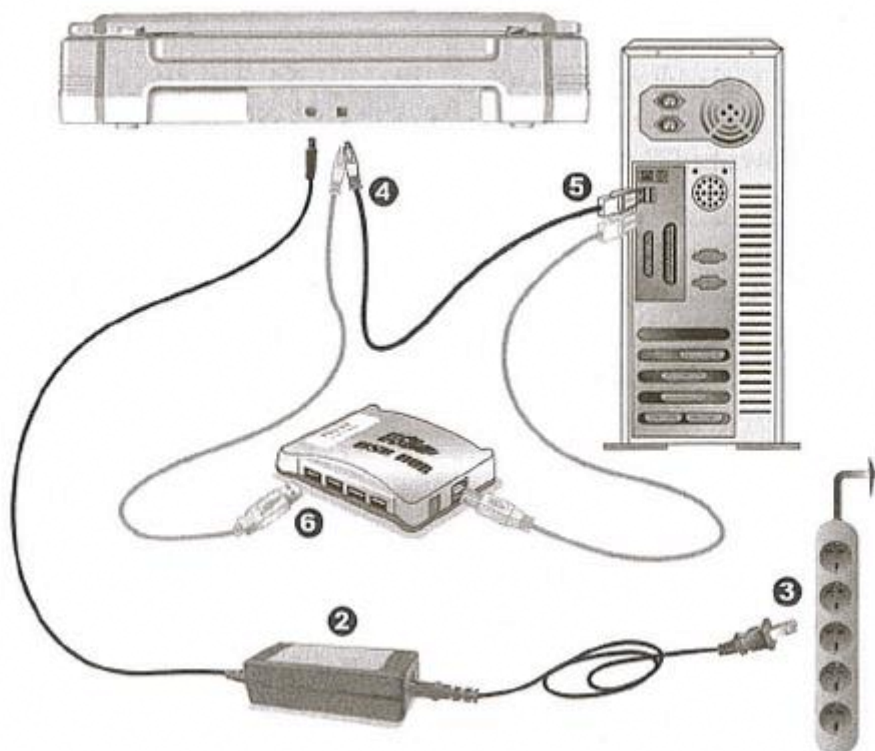
# Scanner

## Connecting the scanner

---

**WARNING:** Please make sure the scanner is turned off before you plug or unplug the scanner power adapter.

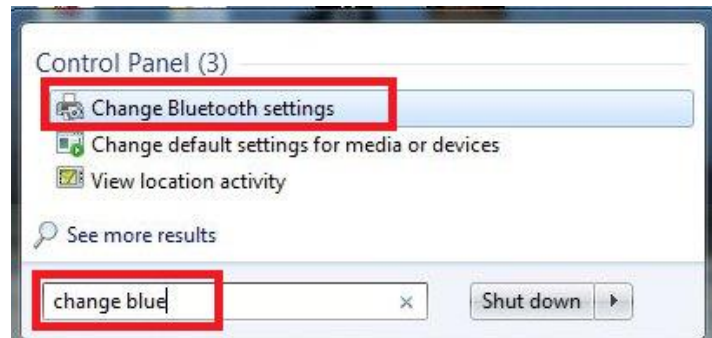
1. Unlock your scanner.
2. Plug the AC adapter into the scanner's power receptor and attach the power cable to the AC adapter.
3. Plug the other end of the power cable into a standard AC power outlet.
4. Plug the square end of the included USB cable to the USB port at the rear of the scanner.
5. Plug the rectangular end of the USB cable to an available USB port on your computer.
6. If you plan to connect your scanner to a USB hub, make sure that the hub is connected to the USB port in your computer. Next connect the scanner to the USB hub.



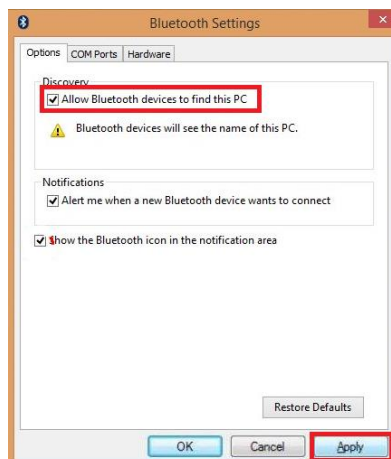
# Bluetooth remote installation and configuration

## Computer configuration

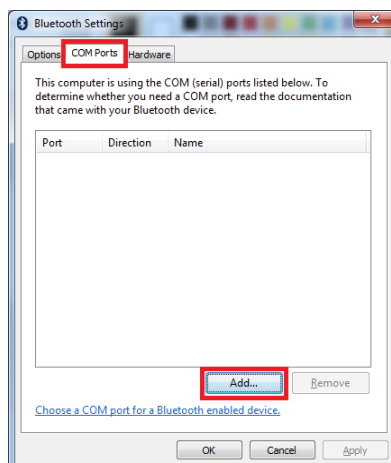
1. Search for « change bluetooth » in « Start / Control panel », then click on « Change Bluetooth settings » :



2. Check « Allow Bluetooth devices to find this PC » (or « this computer » depending on your Windows version), then click on « Apply » :

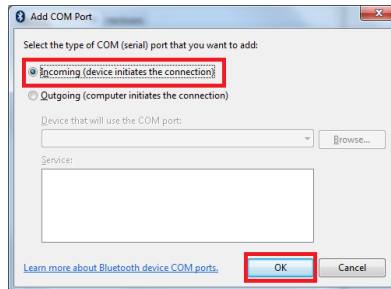


3. Go in the « COM Ports » tab and click on « Add » :

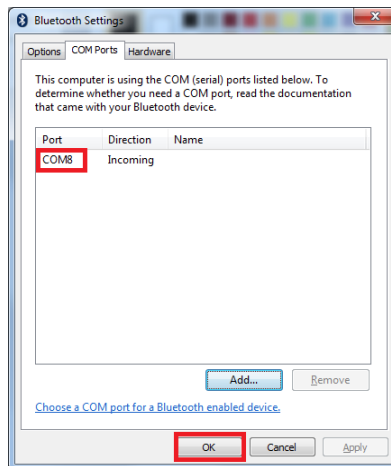


# Bluetooth remote installation and configuration

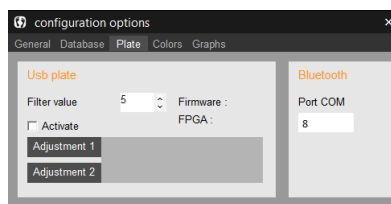
4. Choose « Incoming » then click on « OK » :




5. Once the device is added, take note of its paired COM port so that you can configure the software:



6. Launch the software and go in Configuration \ Parameters \ Plate. Type in the COM port associated with the Bluetooth device:



7. In the Acquisition tab, click on  to enable the Bluetooth link from the software. The square indicator next to the button will become green if the connection is correctly made.

# Bluetooth remote installation and configuration



## Mobile configuration


---


This software can be used on a smartphone or tablet:

- With the Android operating system (version 4.1 minimum)
- With Bluetooth

1. From your mobile device, go in the Bluetooth settings, look for your computer, then pair them.
2. Download and install the Podo Remote app by Medicauteurs from the Google Store.

3. Launch Podo Remote with the  icon, then tap on .

4. Select your computer then tap on OK. This configuration is saved, and your computer's name will appear under the  icon.

5. Tap on  to open the Bluetooth link from your mobile device. The button's indicator becomes green if the connection is correctly made.

6. Then select, accept or cancel acquisitions from your mobile device.



# Software registration procedure

During the software's first installation, the licence will be automatically registered (in green). You can skip this step.

If, later on, you want to install a protected update (in red), here's how to register it.



To launch the software, click on the icon.

**YOU ONLY HAVE 15 DAYS AFTER THE INSTALLATION  
TO REGISTER THE LICENCE**



**AFTER THAT, YOU CANNOT USE YOUR  
SOFTWARE ANYMORE**



## Licence checking

---

On the starting screen, you can see the software's serial number (25 numbers).

Red background: your software is not registered.

AAAAA-AAAAA-AAAAA-AAAAA-AAAAA

Green background: your software is correctly registered

11111-11111-11111-11111-11111

## Licence registration procedure

---

1. Note the software identification numbers.  
To find it, click on "Help" then "About" in the software.
2. On the screen displayed, note the 25 licence numbers :  
AAAAA-AAAAA-AAAAA-AAAAA-AAAAA

# Software registration procedure

## 3. Registration :


**Please email your Seller so that they can deliver your new serial code.**

## 4. Enter your code :

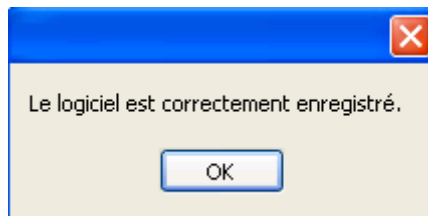
- Click on « Help » desk then « About »

- In the newly opened window, click on 

- Type the new code in this window

Code d'enregistrement :      

- Click on 



This screen appears:

**Your software is registered and ready to use!**

# Medicapteurs database import

You can import MEDICAPTEURS database in the software:

## To import your old MEDICAPTEURS database

You can find the database in the « data » folder, in the software's installation folder.

In this sample, we will copy the old PC database on a USB key to import it in the software

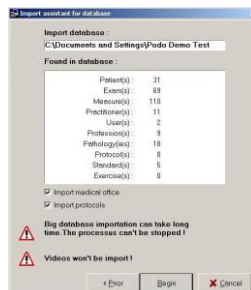
1. Launch « DbManager » in the software's installation folder :



2. Click on « Database Import »



3. DB Manager displays tables to import
4. Click "Next"
5. DB Manager displays the data you can import; click on "Begin" to proceed.



# Using the platform

## Static acquisition

---

There is no gait reference. The patient only has to stand with their heels on the same horizontal line (it will be displayed on screen).

The patient has to stand on the platform by the rear side.

To get a correct acquisition, arms must be held close to the body and eyes looking straight ahead. Make sure there is nothing in the patient's pockets.

On screen, you must see two red lines appearing at the rear of the heels. You need to move the patient's feet to make a single green line.

To record the measure, please read the software User Manual.

## Dynamic acquisition

---

**For FUSYO platforms**, we will not detail this procedure because it requires the acquisition of a walking track. Contact Medicauteurs for any further information.

**For WIN-POD platforms**, the patient must walk in the lateral direction of the platform by unrolling his / her steps on the active surface (black square). A minimum of 2 steps before the platform and 2 steps off the platform must be performed for a probative measure.

To avoid being bothered by the hood, the ideal is to attack the platform by the left for the left foot and by the right for the right foot.

The patient must go naturally on the platform looking straight ahead.

**For WIN-TRACK and WIN-TRACK mini platforms**, the patient must walk in the long axis of the platform.

The patient must go naturally on the platform looking straight ahead. According to its speed and the length of its stride it will be able to make 2 to 3 steps on the active surface of the platform.



# Using the platform

## Postural acquisition

---

A 30 ° positioner is supplied with the Fusyo and available as an option with the Winpod. It makes it possible to record acquisitions in "normal" position (see EPE Standards 85).

If you use a positioner:

1. **You must remove the positioner before starting the software.**
2. Once the software is open, you can replace the positioner.
3. Raise the patient by the back of the platform.
4. Position the patient so that all feet are in contact with the positioner. The arms should be along the body and staring at a target in front of him.
5. Remove the positioner, being careful not to change the position of the patient. From then on, you can start the acquisition.

If you are not using a positioner, please follow exactly the same procedure as the static one.

Postural examinations can be difficult for some patients with a sense of precarious balance (elderly). Stay close to them, be prepared to parry them if necessary, especially during an acquisition with closed eyes.

## Procedure to shut down the platform

---

To shut down the platform:

1. If an acquisition is in progress, just click on Cancel (the large red cross).
2. Exit the software (click on the X located on the upper right corner of the window, then click OK).

The platform is on stanby (still connected to the PC).

3. To turn off the platform's "standby" mode:
  - a. Shut down the computer.
  - b. Unplug the USB cable linked to the computer.

## COPYRIGHT

Copies or reproductions of this document is strictly limited to private use and not authorize for public or collective use, and excerpts or short quotes from this document need to clearly include the author and the source.

All rights reserved. Duplication of any part of the document or the entire document without express written consent of Medicapteurs is illegal and strictly prohibited.

© MEDICAPTEURS - Toulouse - FRANCE - November 2018

[illegible]

[illegible]

[illegible]

## Notes

[illegible]





« Les Espaces de Balma »  
18 avenue Charles de Gaulle - Bât. 34 - 31130 BALMA  
Tel : 33 (0) 562 571 571  
[www.medicapteurs.fr](http://www.medicapteurs.fr)

CE 0124  
Copyright 2018