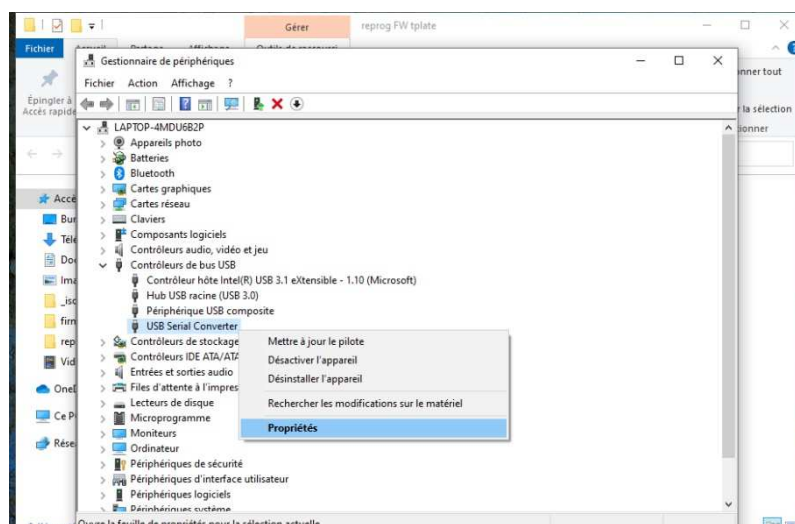


**warning if your processe is not repected , the plate need  
a return on seller office**

## Update firmware Product

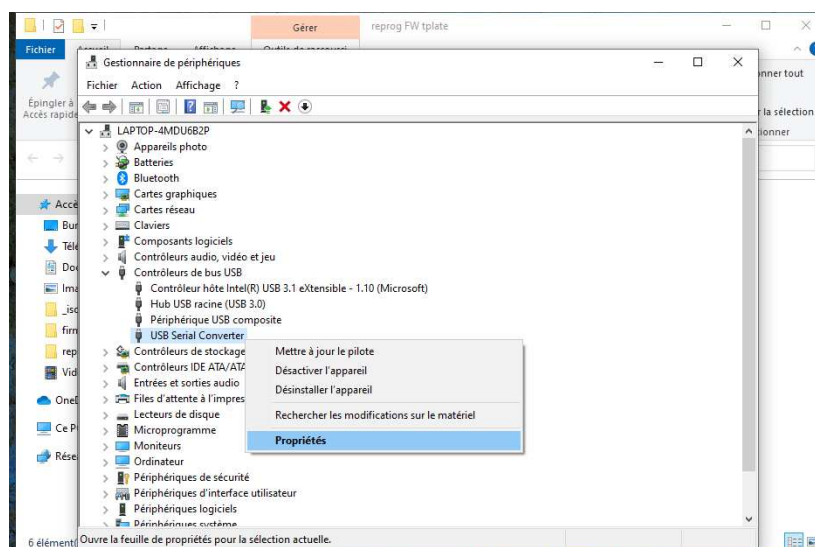
**Before update firmware need to install “flash\_loader\_demo\_v2.8.0.exe”**

- 1- Unzip reprog pack
- 2- Plug the product
- 3- Open « device manager »
- 4- Clic left on « usb serial usb »

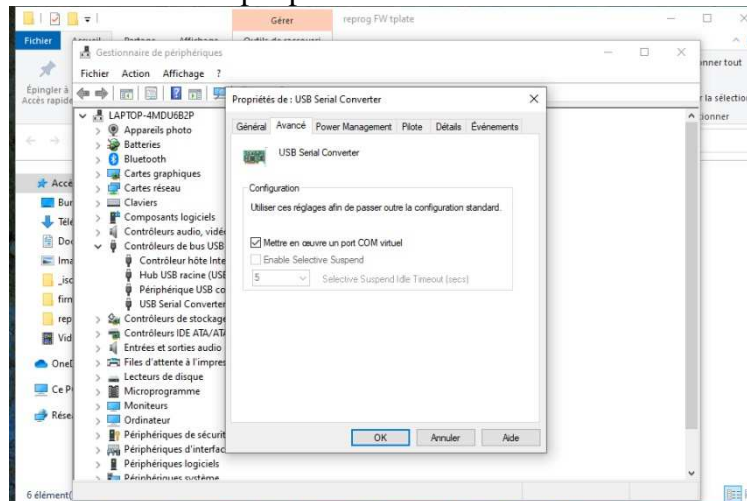


C

- 5- Clic right on « properties »



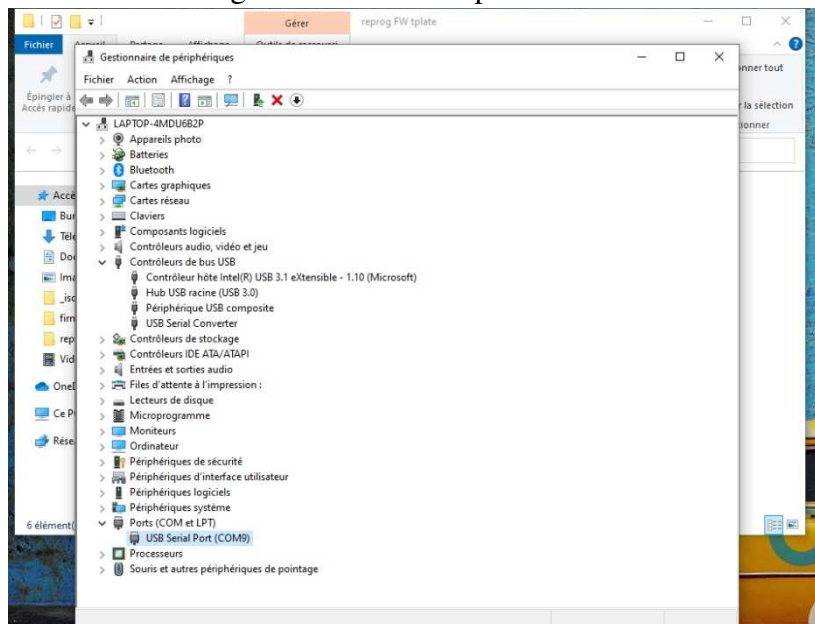
6 -On the top choose « advance »and tip « port com virtual »



7- Unplug the product

8- Plug the product

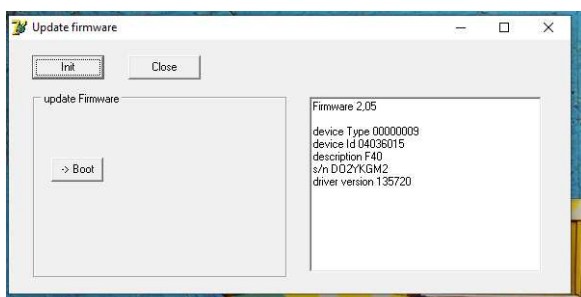
9- See on « device manager » the new com port here it's the com 8



10- Launch F40reprog1

11- Clic on init

12- Verify the your version “here is 2.05” if you are 2,02 continu, if you are 2,00 or under contact Provider



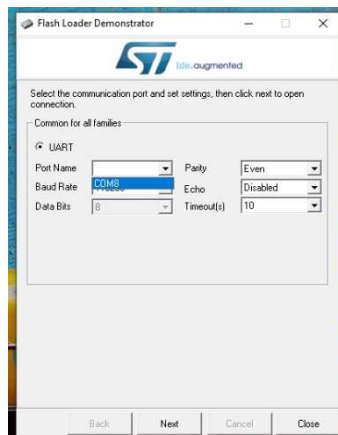
13- Clic on boot, see if you are “no answer “

14- Clic on close

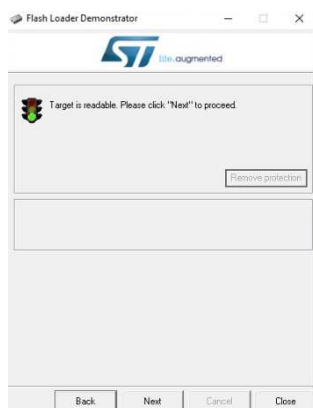
15- Close this software

16- Launch « demonstrator gui », choose the good COM port see before

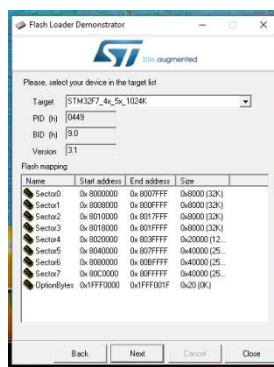
– clic on next



– clic on next



- clic on next

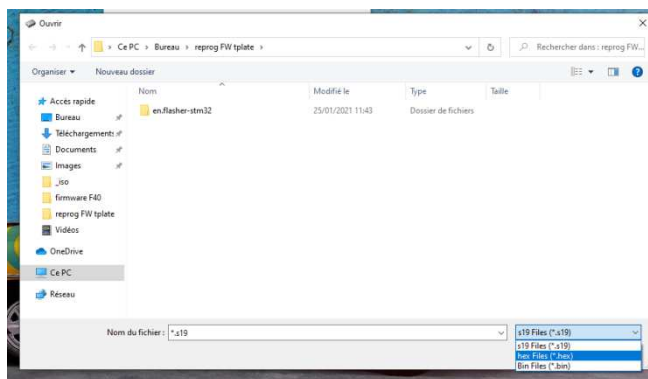


**warning never clic next on erase if you clic on erase need to return plate on seller office.**

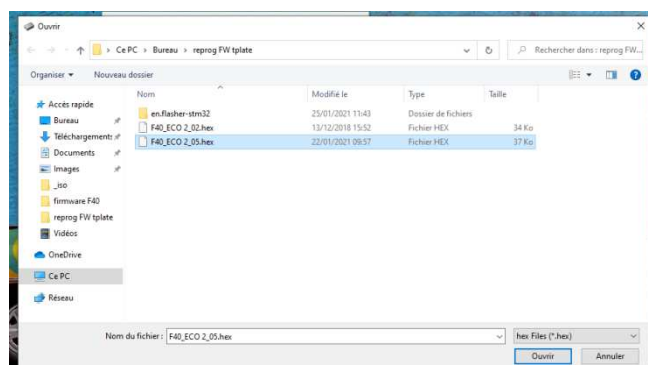
17- Tip download to device



18- Clic on 3 points on the right, choose hex type files ,and select F40\_ new\_firmware



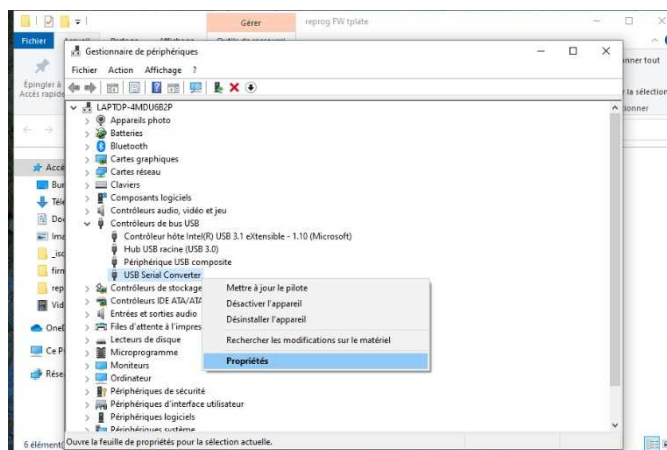
19- Clic next



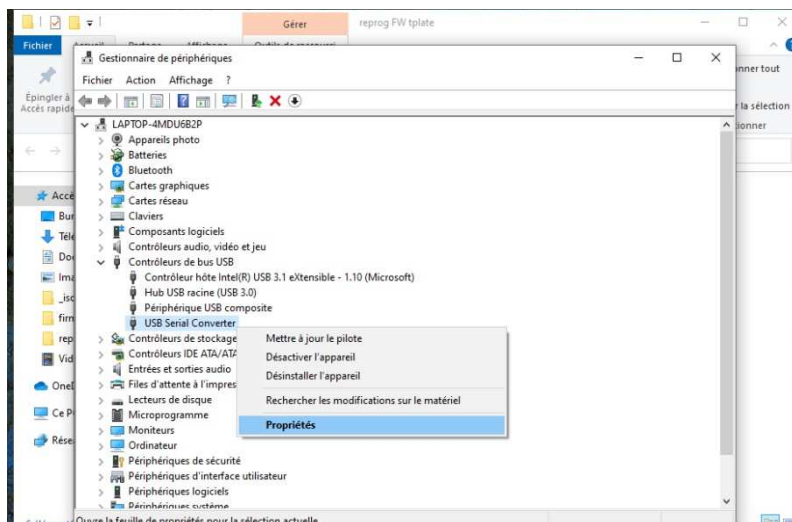


**Your product is update succcessfull**

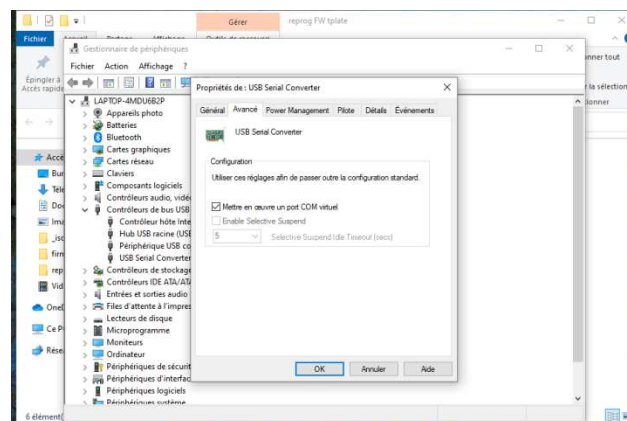
20- For finish, launch « device manager » »



21- Clic left on « usb serial usb » and clic right on « properties »



22- On the top chose « advance », un tip « port com virtual »



23- Unplug the product

24- Plug the product

**your product is ready too work**

